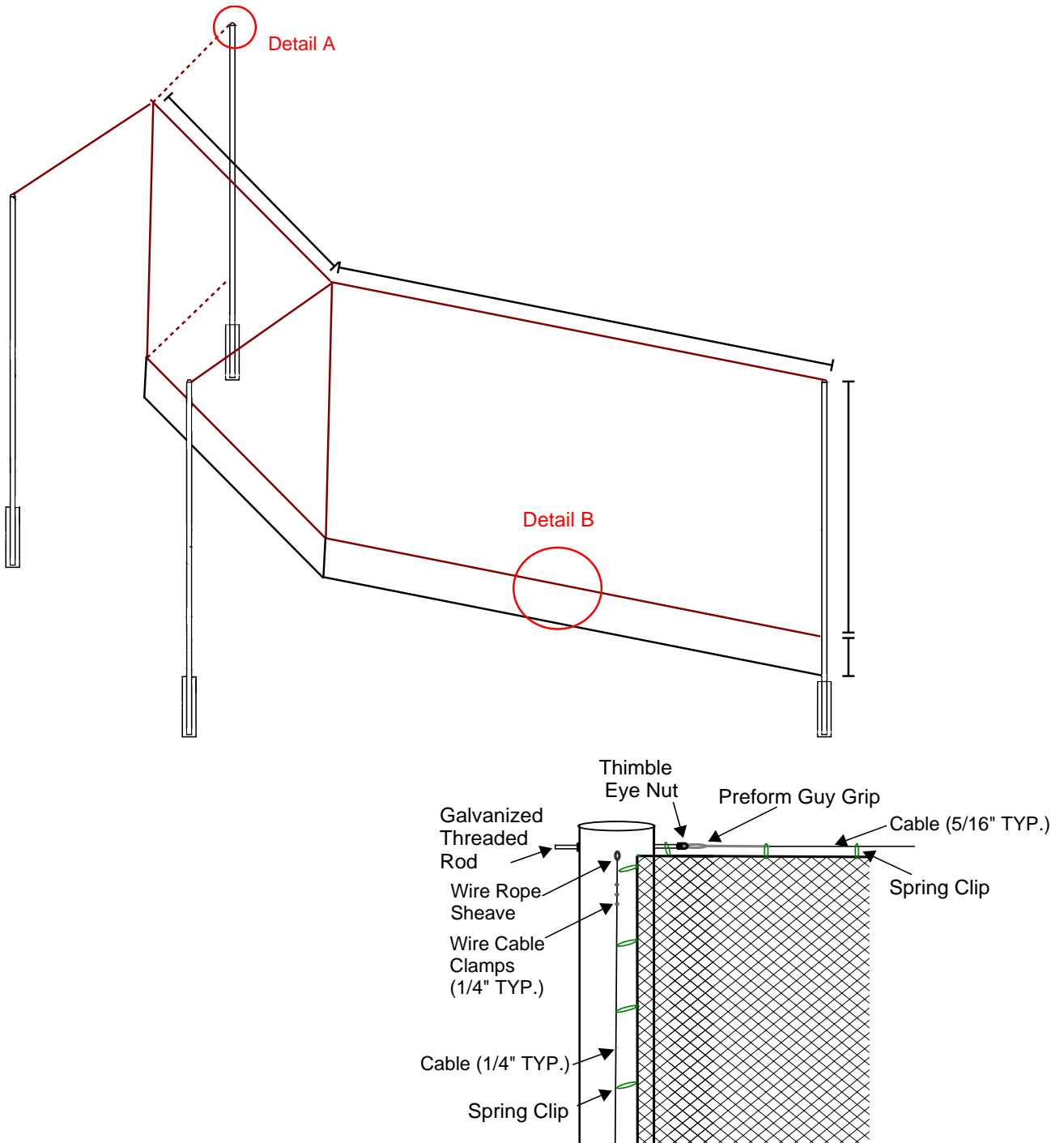


Designed for safety. Built for fun.

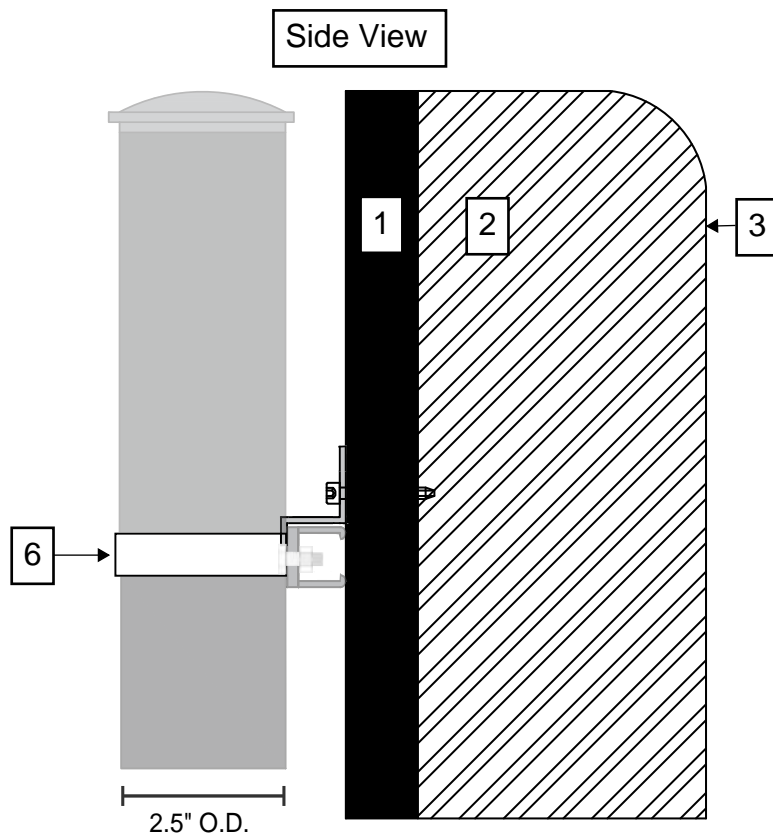


Additional Notes:

- Features steel poles with Stealth Black paint
- Pole sizes & footing based on soil conditions & wind loads
- Fusion wall posts set 4' OC max
- Drawings not to scale

Detail A

Designed for safety. Built for fun.



#1 - 3/4" Severe Weather AWPA compliant Treated Sheathing

- Primed & Painted with extreme conditions exterior paint.

#2 - 3" High Impact Foam

- Density: 1.50 pcf
- Impression Load: 25% 75-85, 65% 128-145 Support Factor 65/25 1.7mm
- Rebound %: 40-48%
- Tear Resistance: 1.5 - 2.5 lbs/in
- Static Fatigue: <35% % Loss @ 25% ILD

#3 - Advantage MVP Vinyl

- 18.5oz/ sq yd
- 3000+ hour UV resistance
- Emboss: Course Matte
- Construction: 9 x 9, 1000 x 1000 Denier
- Tongue Tear: 100 x 100 lbs / 1"
- Grab Tensile: 375 x 375 lbs / 1"
- Adhesion: 26lbs / 2"
- Meets CAL117-2013 Flammability Test
- Abrasion: 1000 Cycles
- Rot, Mildew & Fungus Resistant
- Available in 18 Color Choices

#4 Zeus Clip

- Attached with 1" Galvanized Screw to Plywood
- Overlaps UNISTRUT between posts

#5 UNISTRUT

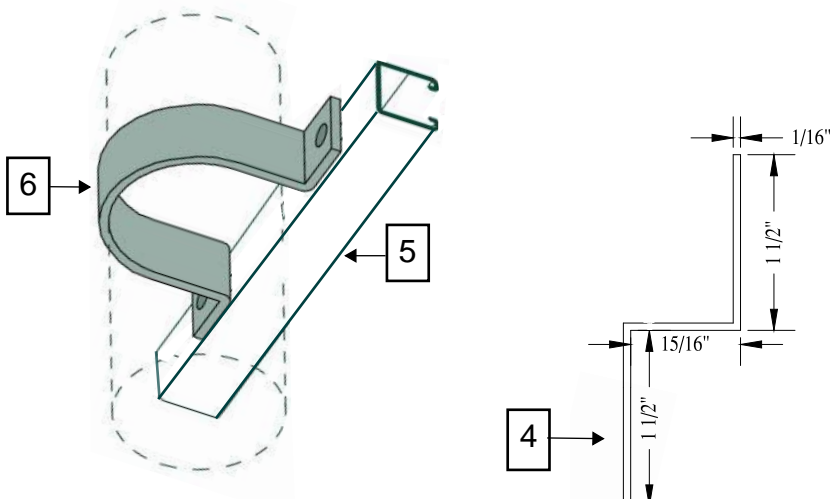
- 1 5/8" x 13/16" Slotted Standard
- 2 UNISTRUT's per pad

#6 - 2 Hole Pipe Strap

- Attached to UNISTRUT w/ Galvanized Bolt and Nut

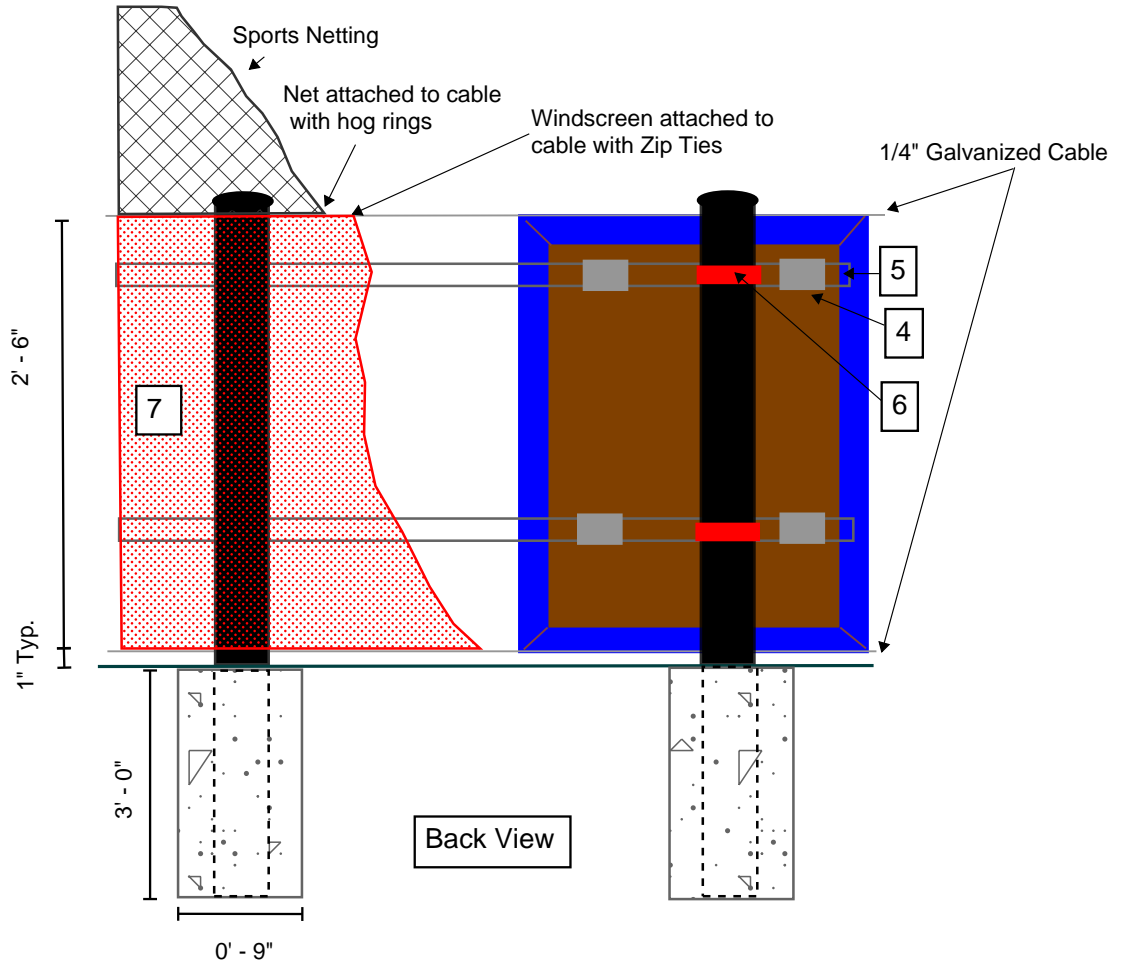
#7 - Windscreen

- Privascreen windscreen can be hung from the back of system to conceal hardware.

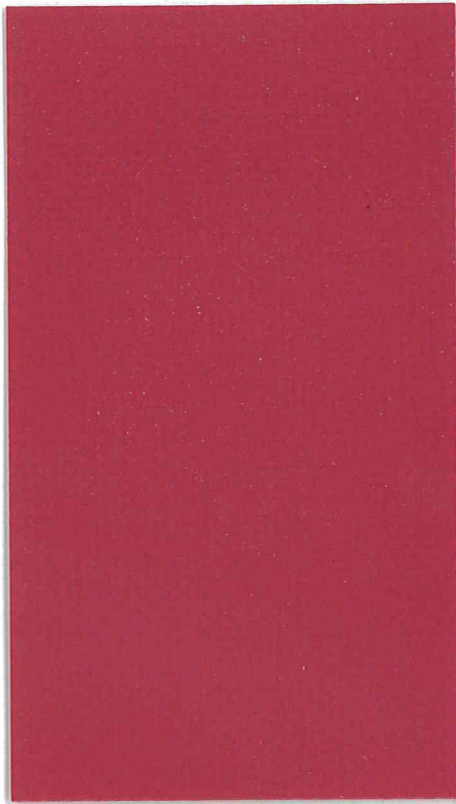


Designed for safety. Built for fun.

Detail B



Designed for safety. Built for fun.



Scarlet Red



Black*

Navy*

True Blue



Regal Blue

Royal Blue*

Carolina Blue



Marine Blue

Forest Green

Green*



Lime Green

Purple

Maroon



Burgundy

Cardinal Red

Red*

Bright Pink

Brown*



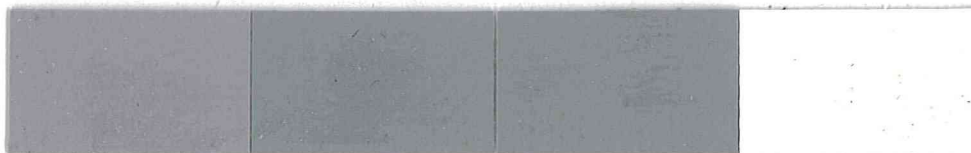
Tan*

Orange*

Tangerine

Yellow*

Charcoal Grey*



Grey*

Steel Grey

Light Grey

White*