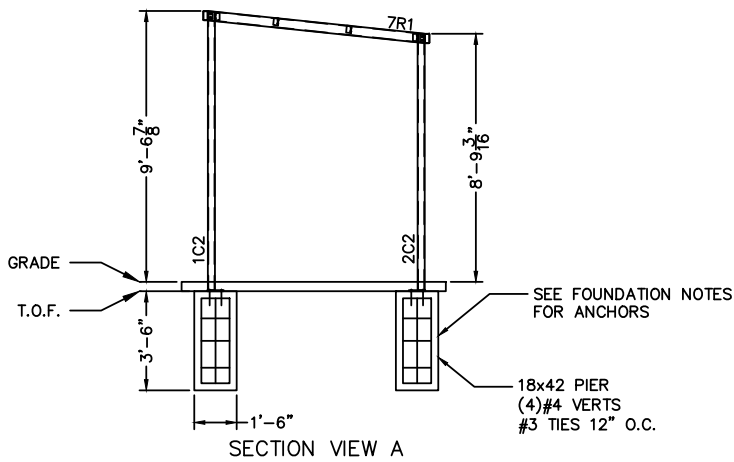
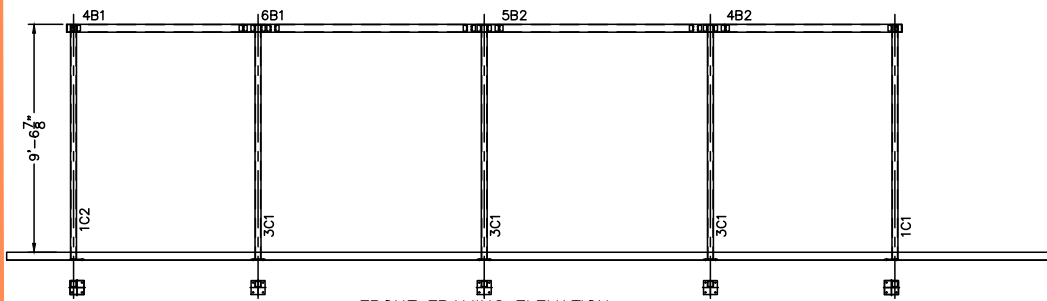


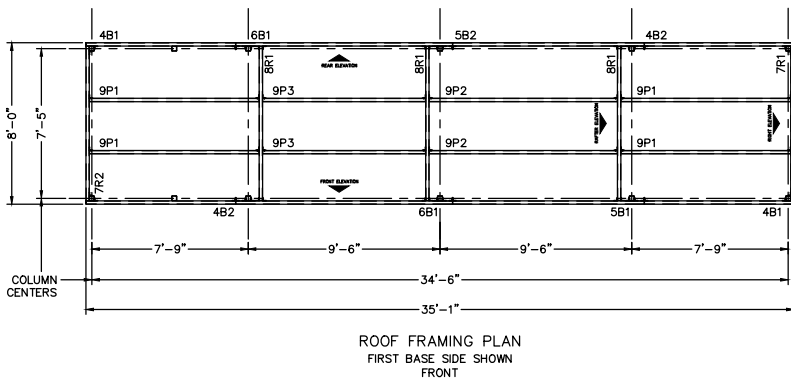
Designed for safety. Built for fun.



Designed for safety. Built for fun.

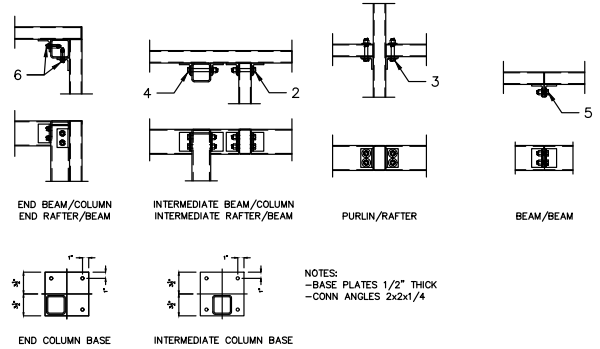


FRONT FRAMING ELEVATION
FIRST BASE SIDE SHOWN



ROOF FRAMING PLAN
FIRST BASE SIDE SHOWN
FRONT

CONNECTION DETAILS



GENERAL NOTES:

CODES AND SPECIFICATIONS

1. IBC 2015
2. ASCE 7-10 MIN DESIGN LOADS FOR BUILDINGS AND OTHER STRUCTURES
3. AISC 360-10 CODE OF STD PRACTICE FOR STEEL BUILDINGS

MATERIALS

- STEEL TUBES = ASTM A513 OR A500 MIN
- STEEL PLATE = A36 MIN
- FIELD BOLTS = 1/2" DIA GR5 MIN, GALV OR ZINC
- ALL SHOP WELDS TO BE 3/16" FILLET UNLESS NOTED OTHERWISE

ROOF PANELS AND WALL PANELS

- PBR PANEL 1-1/4"x24Gx36" COVER MFR BY METAL SALES OR EQUAL
- LENGTHS AS REQUIRED, 2-SPAN MIN

FINISHES

- POWDER COATED COLOR #2

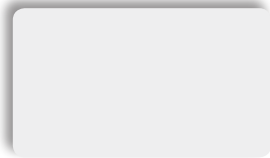
DESIGN LOADS

1. ROOF LOAD
 - LIVE LOAD 20 PSF MIN
2. SNOW LOAD
 - 20 PSF
3. WIND LOAD
 - BASIC WIND SPEED (ULTIMATE 3-SEC GUST) 115 MPH (90 MPH3-SEC GUST ASD)
 - WIND EXPOSURE - C
 - Kz = 0.85
 - Kzt = 1.0
 - Kd = 0.85
 - G = 0.85

FOUNDATIONS

1. CONCRETE SPECIFIED MINIMUM COMPRESSIVE STRENGTH OF 2,500PSI AT 28 DAYS
2. CONCRETE REINFORCING STEEL SHALL CONFORM TO ASTM A615, GRADE 60
3. ALLOWABLE SOIL BEARING PRESSURE (NET) - 1500 PSF
4. CAST IN PLACE ANCHOR RODS=ASTM F1554 GR55, GALV, UNO 1/2x6 EMBED MIN
5. POST INSTALLED ANCHORS = 1/2x3 WEDGE ANCHOR MIN

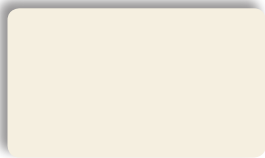
Designed for safety. Built for fun.



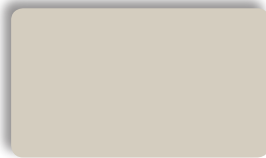
Snowdrift White (W81)



Linen White (81)



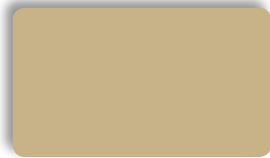
Sandstone (W51)



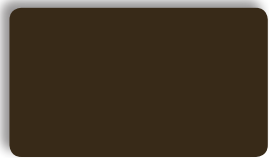
Parchment (W74)



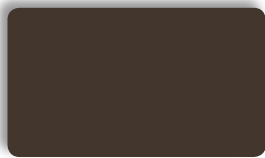
Taupe (74)



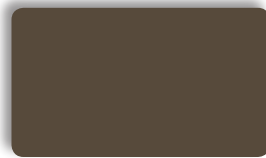
Khaki (88)



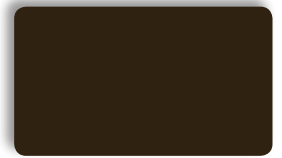
Medium Bronze (H4)



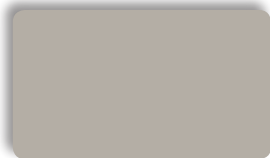
Weathered Copper (W50)



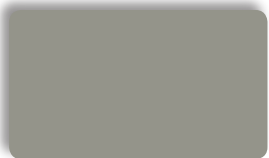
Mansard Brown (133)



Dark Bronze (50)



Ash Grey (25)



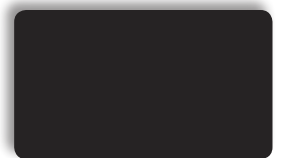
Old Town Grey (W25)



Old Zinc Grey (W29)



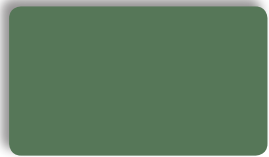
Slate Grey (W38)



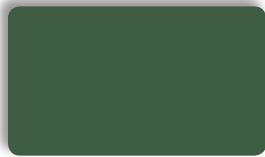
Matte Black (106)



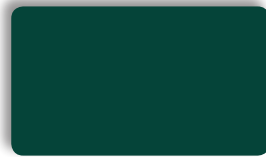
Aged Copper (65)



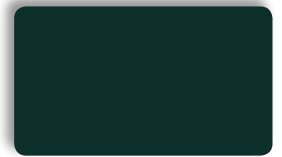
Patina Green (W58)



Hemlock Green (M7)



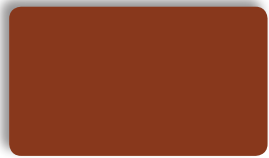
Classic Green (66)



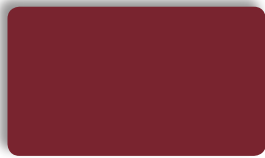
Felt Green (W66)



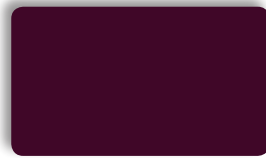
Patriot Red (73)



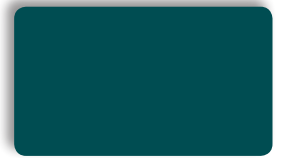
Terra Cotta (W72)



Colonial Red (W75)



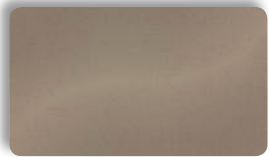
Brandywine (P8)



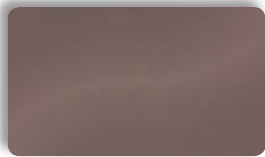
River Teal (59)



Metallic Silver (K7)¹



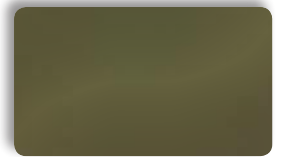
Champagne Metallic (168)¹



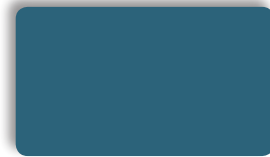
Mistique Plus (W31)¹



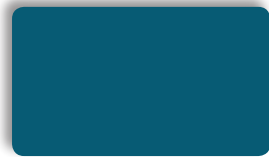
Copper Penny (W92)¹



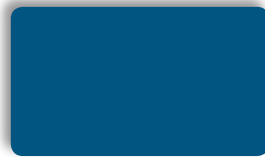
Antique Patina (M1)¹



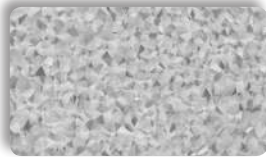
Tahoe Blue (W71)



Ocean Blue (35)



Regal Blue (W35)



Galvalume[®] (41)
 Non-painted Finish
 25 Year Warranty