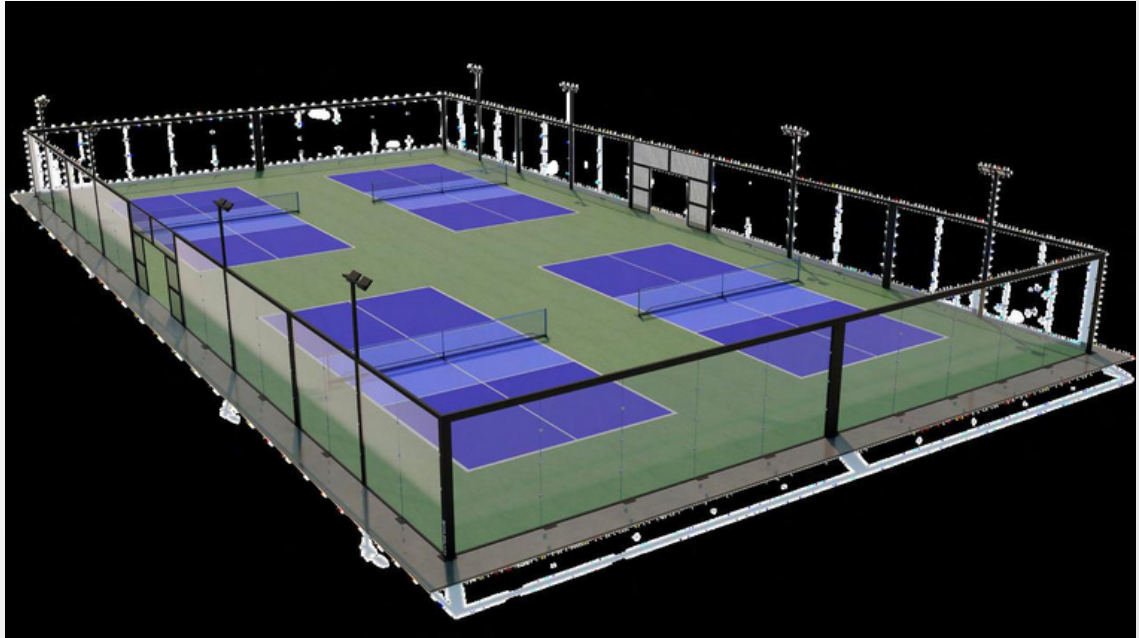


ICKLEGLASS™

EXPERIENCE

“THE SINGLE MOST DYNAMIC INNOVATION IN SPORTS”



FEATURES



SOUND SUPPRESSION **50% NOISE REDUCTION**

Glass-enclosed perimeter isolates sound and neutralizes disruption



HURRICANE STRENGTH **99MPH WINDLOAD**

Galvanized SPHC steel columns paired with 12mm explosion-proof glass



PANORAMIC GLASS **360 DEGREE**

Experience boundless panoramic views with crystal glass clarity

NIGHT VISION **50-FC LED**

8-piece 200W LED system ensures vibrant, evenly distributed court illumination

Contact: Ron Dubas, **President**

531-207-9505
 ron@unlimitedsportssolutions.com
 www.unlimitedsportssolutions.com

THE FUTURE IS PICKLEGLASS



PICKLEGLASS™

GLASS 12MM TEMPERED IMPACT

Crafted with unmatched precision, our 12mm tempered glass panels deliver crystal-clear panoramic views while suppressing disruptive acoustics by 50%. Beyond clarity and sound control, these panels are rated explosion-proof and fully compliant with the European Standard EN12150-1, ensuring maximum safety and quality.



GALVENIZED SPHC STEEL

Galvanized SPHC steel columns fortify our courts with herculean strength and structural integrity. Each column undergoes a specialized zinc powder coating process, ensuring robust protection against rust and corrosion. This is supported by a 10-year warranty, guaranteeing long-term durability and quality even through the most volatile weather conditions.

LIGHT 8 LED 200W ILLUMINATION

Our expertly crafted 8-piece 200W LED lighting system ensures unparalleled illumination, casting brilliant light and enhancing visibility across every inch of the court. This advanced lighting not only elevates gameplay but also creates a mesmerizing ambiance for both players and spectators. We adhere to USA Pickleball and USTA lighting specifications.

PICKLEGLASS™ MODEL SPECS

PICKLEGLASS™ SINGLE COURT 33x66'

DIMENSION: 33x66ft

STEEL CORNER COLUMNS: 4pc: 6in x 6in x 10ft

STEEL SUPPORT COLUMNS: 8pc: 6in x 4in x 10ft

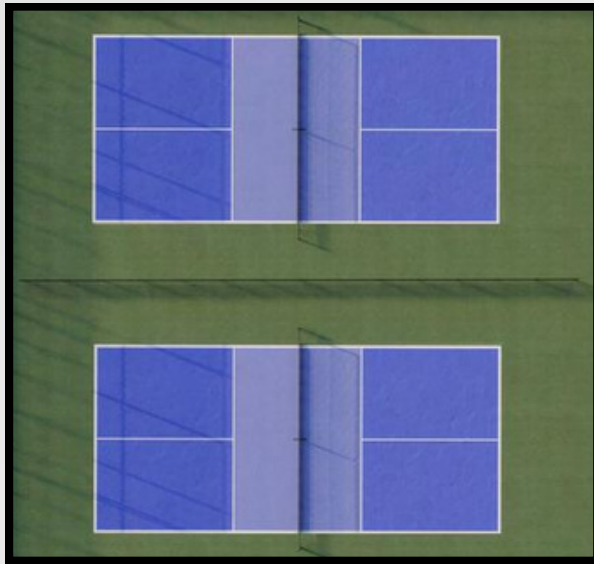
STEEL WIRE GRIDS: 4pc: 6.6ft x 3.3ft

GLASS PANELS: 26pc: 6.6ft x 9.9ft

LIGHT LED 200W : 8pc: 50-FC

LIGHT POSTS: 4pc: 20ft height

ASSEMBLY: 1530pc: Bolts, Screws, Washers



PICKLEGLASS™ MULTI-COURT

PICKLEGLASS™ systems are designed for flexible adaptation to various layouts and dimensions. While we offer standard models, they can be further tailored to meet specific client requirements.

PICKLEGLASS™ MULTI-COURT DIMENSIONS

SINGLE COURT DIMENSIONS: 33x66ft

DOUBLE COURT DIMENSIONS: 66x66ft

TRIPLE COURT DIMENSIONS: 96x66ft

FOUR COURT / TENNIS DIMENSIONS: 127x66ft

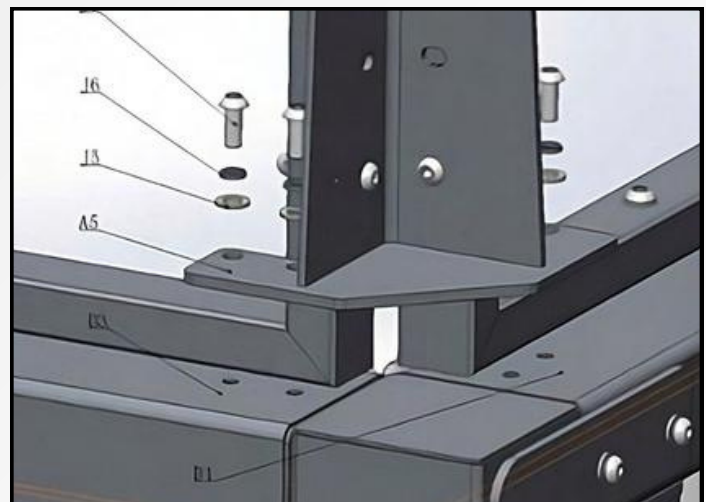
STREAMLINED INSTALLATION

WE PROVIDE STEP BY STEP INSTRUCTIONS

REQUIRED CREW: 3-4 WORKERS

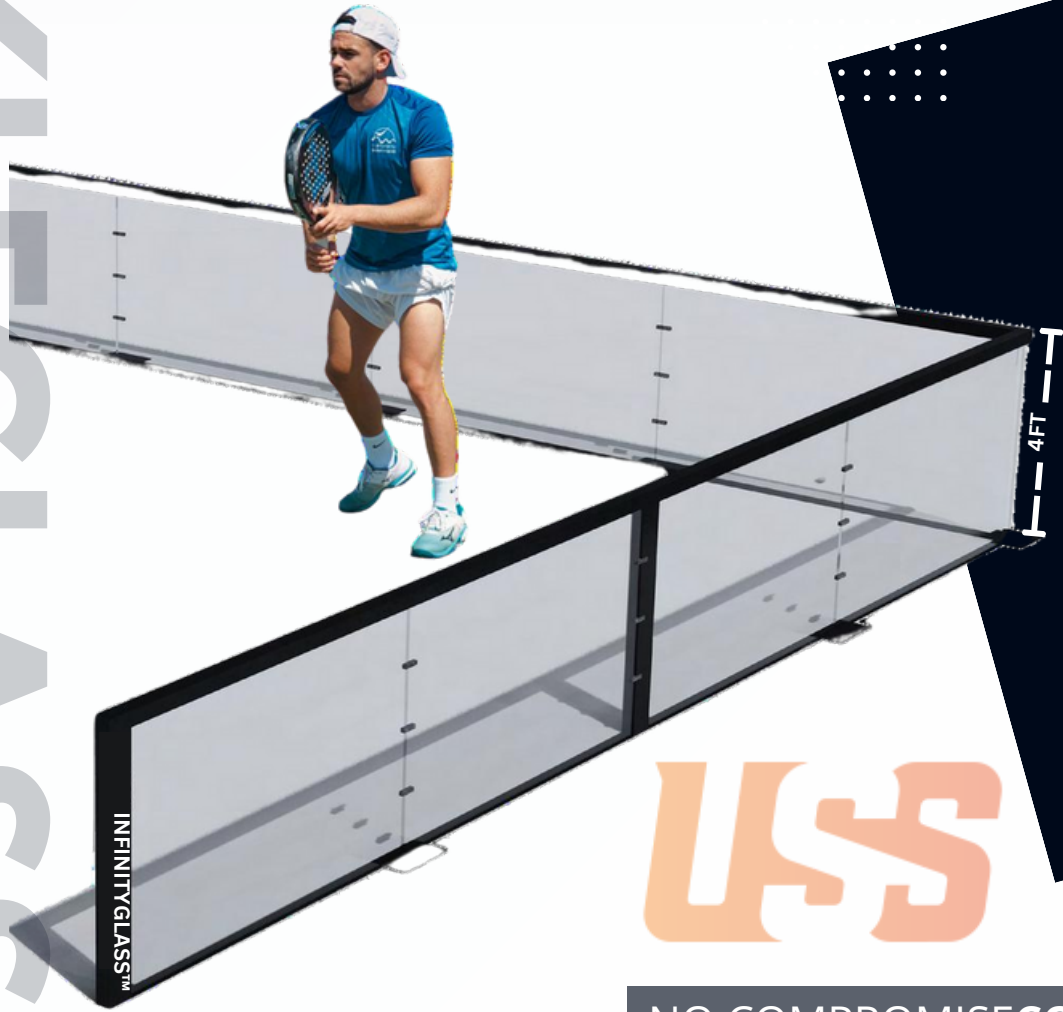
ESTIMATED INSTALLATION: 2-3 DAYS

PICKLEGLASS™ systems are accompanied by a comprehensive installation manual, curated to streamline the assembly process. Catering to both novice and experienced installers, our installation manual offers detailed step-by-step instructions, ensuring a seamless and proficient installation.



INFINITYGLASS™

INFINITYGLASS™

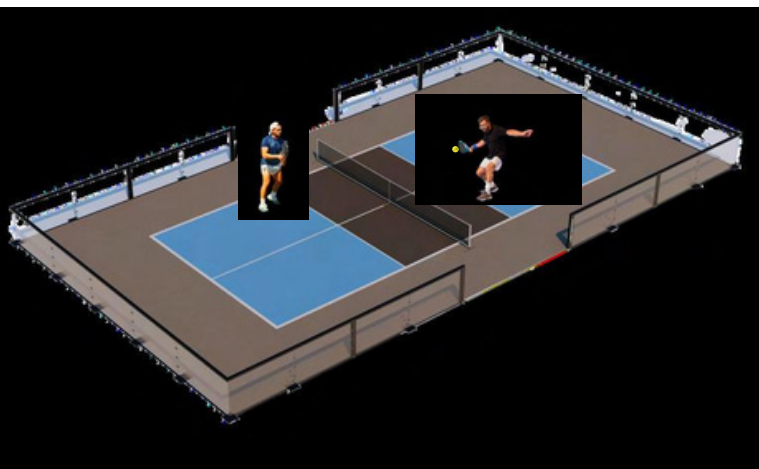


BEYOND
BOUNDARIES



NO COMPROMISE COURT BARRIER

Experience the open-air with INFINITYGLASS™, court enclosures designed for next era play. Replace your chainlink dividers with our sleek, four-foot high glass panel perimeter system. INFINITYGLASS™ delivers boundless visibility and modern sophistication, backed by ultimate durability and a 10-year warranty. The innovative blend of SPHC galvanized steel and tempered glass redefines the category, merging form and function in an unprecedented way.



ICKLEGLASS™

INFINITYGLASS™

UNIVERSAL APPLICATION

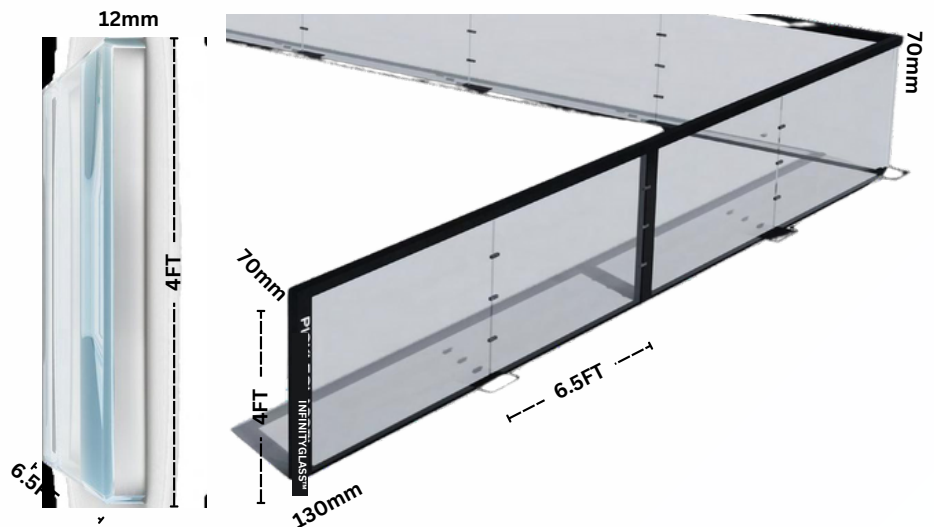
INFINITYGLASS™ enhances both residential and commercial courts, indoor and outdoor, bringing a new level of vibrancy and elegance to the game. Its adaptable design ensures flawless integration into any environment, improving the design and utility of both backyard play and professional venues. It's now economically feasible to install custom designs, offering premium visual upgrades without the high cost.



INFINITYGLASS™ SPECIFICATIONS

GLASS PANELS

STEEL COLUMNS



UFS

PICKLEGLASS™

WEATHER-TECH 10 YEAR WARRANTY

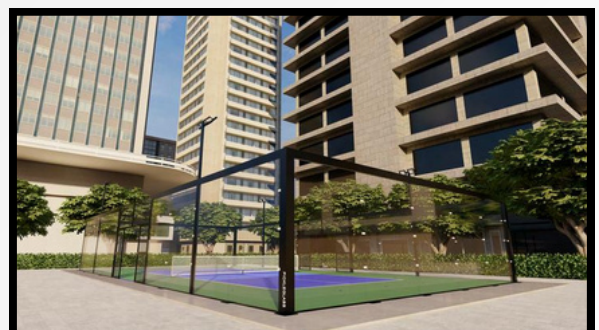
PICKLEGLASS™ is engineered to endure diverse climatic conditions, ensuring durability and longevity across all environments. Whether facing scorching heat, biting cold, or relentless humidity, the robust construction and materials of PICKLEGLASS™ stand up to the elements. We stand behind the long-term reliability of PICKLEGLASS™ with a 10-year guarantee against rust and corrosion.



PICKLEGLASS™ PATENTS

PICKLEGLASS™, protected by several patent filings and extensive surveillance services, safeguards its distribution channels and customers against the risk of inferior imitations. PICKLEGLASS™ is an exclusive innovation that is protected to preserve its authenticity.

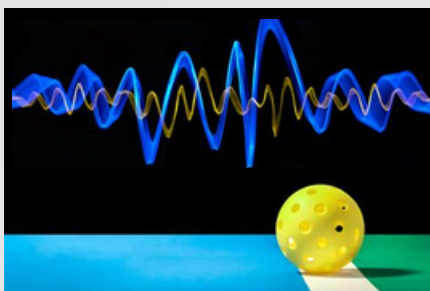
EXPLORE THE POSSIBILITIES



50% SOUND SUPPRESSION

SILENCE IS GOLDEN

PICKLEGLASS™ stands today as the most effective sound-proofing system in the market. Engineered to isolate acoustic disruption, PICKLEGLASS™ addresses the long-standing noise concern associated with the sport. This makes PICKLEGLASS™ not only a game-changer in sports construction, but also the first genuine solution for noise sensitive communities. With its advanced design and focus on sound-suppression, PICKLEGLASS™ is garnering global recognition for solving a widespread issue.



TESTED & CERTIFIED

The sound-proofing system of PICKLEGLASS™ is tested and verified by an independent, certified testing facility. Laboratory tests confirm PICKLEGLASS™ meets the highest quality standards, significantly reducing noise decibels by approximately 50%. This validation not only proves our commitment to the industry, but also solidifies our reputation as an innovator in sports construction.

LAB RESULTS

The Sound Transmission Class (STC) measures the **1m2m5m** soundproofing ability of building materials or components, with higher STC values indicating better performance. This is tested by generating meters noise at specific frequencies and measuring the sound transmitted through the material.

EXHIBIT A illustrates the configuration used for the acoustic tests conducted at the testing facility. A sound source was positioned at the center of the PICKLEGLASS™ court, with sound sensors located at distances of 1m, 2m, 5m, and 10m outside the court. The sound source inside the court consistently generated acoustical output ranging from 80 to 90 decibels.

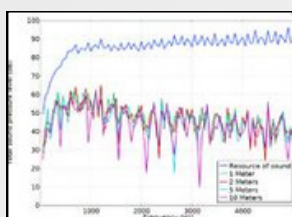
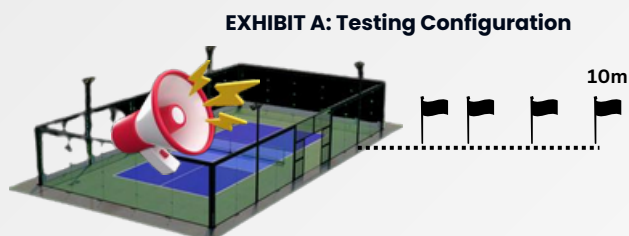


EXHIBIT B represents the correlation between the controlled sound output maintained at 85dB inside PICKLEGLASS™ and the sensor measurements taken at various distances outside its perimeter. The test results demonstrate that, on average, a 50% reduction in decibel levels was achieved at the various distances measured from the sound source. As expected, the data reveals that decibel levels decrease with increasing distance from the sound source. Surprisingly, at distances of 5-10 meters, decibel readings recorded reductions of up to 75%.

EXHIBIT C demonstrates how PICKLEGLASS™ achieves its remarkable soundproofing effectiveness. The sound waves are reflected off the glass walls, redirecting the sound vertically and dispersing it upwards, directly above the court. The glass barrier significantly minimizes lateral sound dispersion and noise impact on nearby areas, making PICKLEGLASS™ particularly effective in dense or noise-sensitive environments due to its vertical sound redirection.

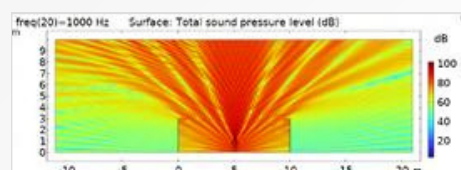
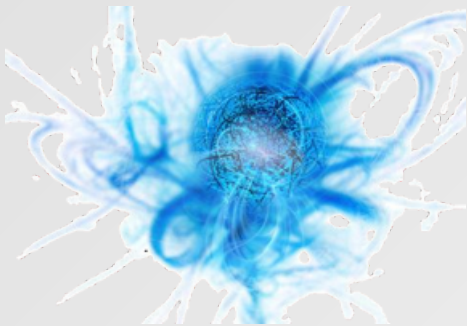


EXHIBIT C: Distribution of Sound Pressure

99MPH HURRICANE WINDS

BUILT FOR WAR

PICKLEGLASS™ artfully merges unmatched strength and sophistication, capable of withstanding winds up to 90 mph and offering mesmerizing panoramic views. Its fusion of tempered glass and SPHC steel creates a resilient, fortress-like structure, guaranteeing long-term durability of your investment. Engineered for all-weather conditions, PICKLEGLASS™ sets a new standard in sports court construction.



TESTED & CERTIFIED

The strength and durability of PICKLEGLASS™ has been validated by an autonomous, accredited testing institution, ensuring the highest standards of quality and safety. Laboratory tests substantiate that PICKLEGLASS™ possesses exceptional wind resistance, demonstrating the capacity to endure hurricane-force winds reaching speeds of up to 99 mph.

LAB RESULTS

Wind load calculation is an essential component in engineering, especially in the design and construction of buildings and structures. This process entails assessing the force exerted by wind on a structure and determining the structure's ability to withstand such forces.

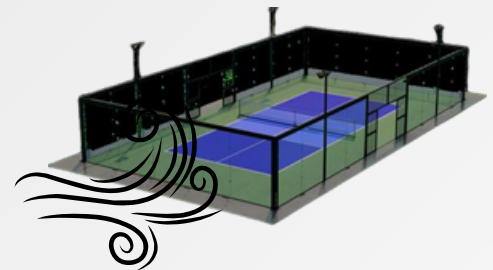


EXHIBIT A: Stress Capacity EXHIBIT A demonstrates that as the wind speed escalates, there is a commensurate increase in the pressure exerted on the PICKLEGLASS™ structure, leading to a proportional augmentation in the deformation of the overall structure. The graph plateaus at a point indicating the structure's maximum capacity for wind load, beyond which it cannot sustain without additional reinforcement. At this juncture, significant deformation suggests that these levels are unsuitable unless further strengthened. Through analysis, it has been established that the fence's maximum sustainable wind load, without jeopardizing the integrity of its joints and screws, is approximately 160 km/h, which converts to 99 mph.

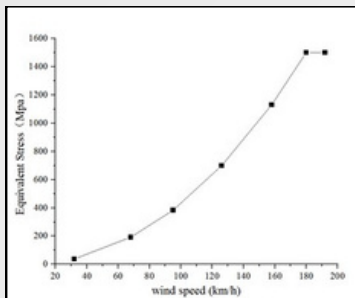
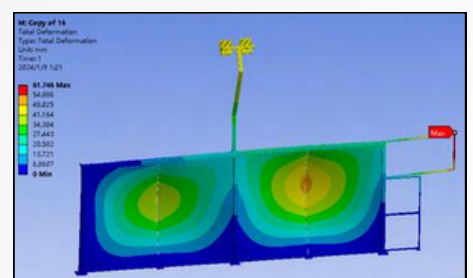


EXHIBIT B illustrates the results of the Displacement Analysis. This analysis shows the displacement variations in the fence structure when subjected to wind loads, which are indicated by red areas on the heat map. Displacement is the positional change in different parts of the structure due to maximum strain. This test is crucial for pinpointing potential weak spots likely to fail under high stress. With a wind load of 99 mph, the heat map highlights red around the steel wire grid's connection joints, particularly at the court entrances. Notably, the structural integrity of the glass remains intact, which is reassuring given its status as the highest risk factor.

EXHIBIT B: Stress Level Heat Map



50-FC LED NIGHT VISION

IGNITE THE NIGHT

PICKLEGLASS™ lighting systems are designed to elevate the player experience and extend on-court hours at your residential or commercial property. Our comprehensive package includes 8 top-tier, high-performance LEDs, each crafted and positioned for optimal performance. The sleek, low-profile design of PICKLEGLASS™, featuring a clear tempered flat glass lens and a watertight aluminum frame, provides outstanding brightness and uniformity while reducing energy consumption approximately 75% compared to standard HID lighting systems.

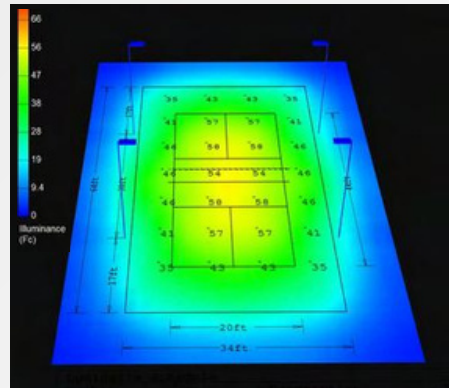


TESTED & CERTIFIED

PICKLEGLASS™ lighting systems are designed in compliance with USA Pickleball and USTA standards. We have meticulously engineered the structural placement of the lights for both our single and multi-court models, ensuring evenly distributed illumination across the court for optimal visibility and precise cut-off.

PHOTOMETRIC

A photometric study can help determine the optimal layout of light poles and fixtures to achieve desired illuminance levels and uniformity across the Primary Playing Area (PPA). PICKLEGLASS™ lighting systems are engineered to deliver consistently exceptional performance. The results of the photometric study conclude an average maintained level of 51fc and uniformity ratio of 1.64.



- **USA Pickleball Specifications**
- **High Performance, Full Cutoff LED**
- **Aerodynamic, Low-Profile Shape**
- **80% Energy Reduction**
- **50,000 Hours Expected Life**
- **Lightweight for Easy Installation**
- **Instant On and Dimmable**
- **5-Year Warranty**
- **Photometric Testing (3rd Party Tested)**
- **UL listed to US safety standards**

SPECIFICATIONS	
LUMENS	34,000
WATTAGE	200W
CCT	2700-6500K
CRI	70
VOLTAGE	AC 100-240V 277V~, 50/60HZ
ENERGY	80% REDUCTION
TEMP RANGE	-40°F TO 140°F
GRADE	IP65
LIFE	50,000 HOURS
WARRANTY	5 YEARS

	ILLUMINATION SUMMARY			
	AVG	MAX	MIN	MAX MIN
PPA	51.4	68.3	34.0	1.66
VERTICAL	33.1	36.2	29.8	1.21



US Unlimited
Sports
Solutions

Contact: Ron Dubas, President

- 📞 531-207-9505
- ✉️ ron@unlimitedsportssolutions.com
- 🌐 www.unlimitedsportssolutions.com

Thank you